

Release GC-PowerPlace v13.1 Notes

Table of Contents

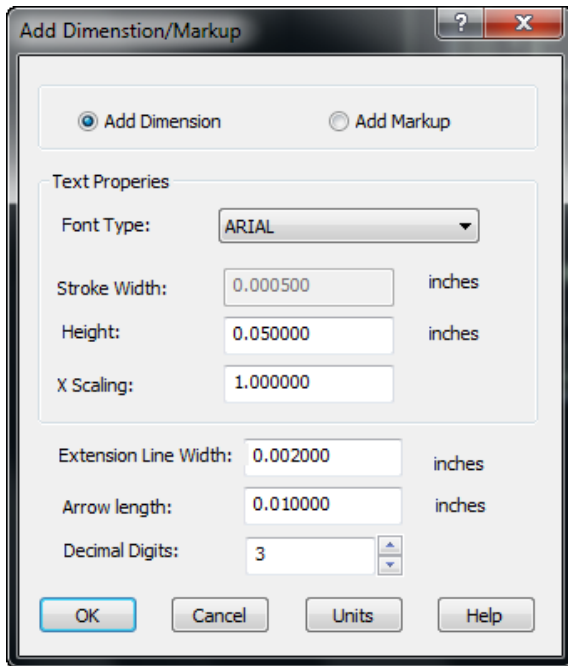
- NEW FEATURES 2**
 - ADD DIMENSIONS AND ADD MARKUP 2
 - PLUGIN AUTOMATION 3
 - ON LINE HELP 3
- IMPROVED FEATURES..... 3**
 - MEASURE MODE 3
 - FIND ANGLE 3
 - POLYGON DRAWING SPEED 4
 - PRINTING UPDATE 4
- 64BIT VERSION NOW AVAILABLE 5**
- ITEMS FIXED SINCE V12.4.6..... 5**

New Features

Add Dimensions and Add Markup

Functionality to allow the addition of both dimensions and markup information has been added.

The function can be found under Edit > Create > Dimensions or via the Toolbar icon. The initial setup dialog allows the Text Properties and the extension line properties to be set to customer specific parameters. It is also where the user chooses whether Dimensions or Markup are to be added.

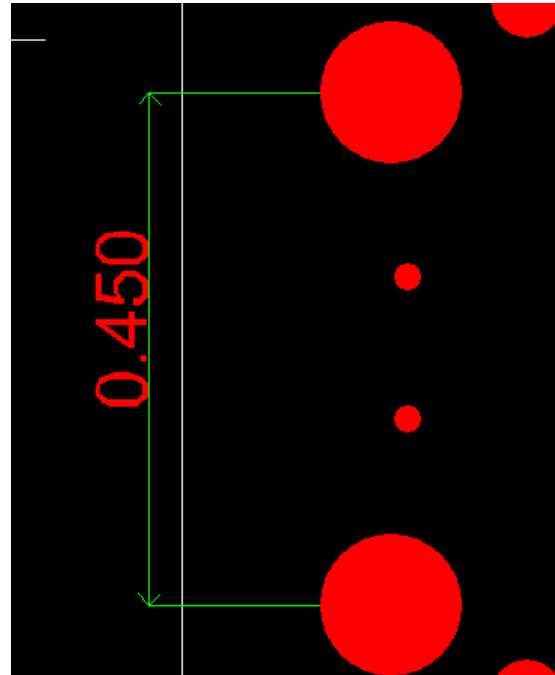


For Dimensioning the user needs simply to click on two objects and the appropriate extension lines, arrows and value (in the current job units) are created and then placed by a simple left mouse click. For any two objects Center to Center distance is displayed by default. However, the distance can be changed to Edge to Edge or Edge to Center by holding down the Shift key and double clicking the left mouse button. Again, once the location of the dimension text is correct, a left mouse click adds the information to the current Editable layer.

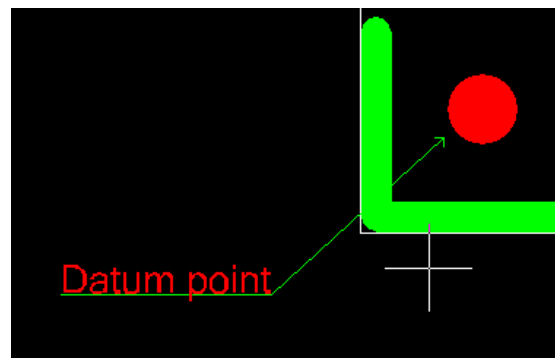
If the two object being dimensioned are at an angle, then diagonal distance is displayed by default. In order to only display the horizontal dimension press and hold the Right arrow on the keyboard. For the vertical distance press and hold the Up arrow on the keyboard. Once either arrow key is released, the diagonal distance is displayed.

To change the side that a dimension is displayed for a diagonal distance hold down the Ctrl button and double click the left mouse button.

The result of the dimensioning appears below:



Markup allows specific information to be added to a layer along with a single arrow. In Markup mode simply click to define the point of the arrow and then again where the Text is to be located. Then simply type the required text. In order to place text on multiple lines use Shift+Enter to place a soft return within the Text string. The result of the Markup appears below:



One additional option for Markup is for the X,Y or both X and Y co-ordinates to be displayed for the arrow end of the markup line. In order to cycle through the options hold down the Shift key and double click the mouse button. From the initial free text option, the next information displayed is the X value, then, following a second Shift+Double Click you get the Y value. Finally both X and Y are displayed before cycling back to the free text.

Note: the co-ordinate displayed is the end of the arrow. If you require the center of a drill hole for example, use Jump Nearest to snap to the center of the feature before defining the arrow location.

Plugin Automation

A number of new functions have been added to the Plugin Automation. Details can be found within the programming environment.

On Line Help

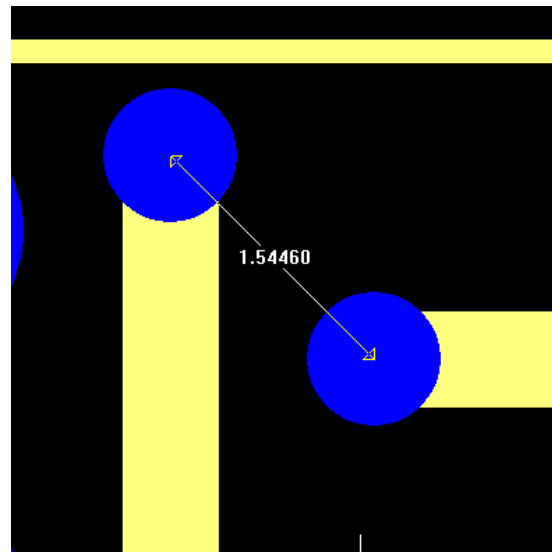
All products have finally had their On Line Help files updated to the HTMLHelp format, allowing the Help file to appear within the product again.

Improved features

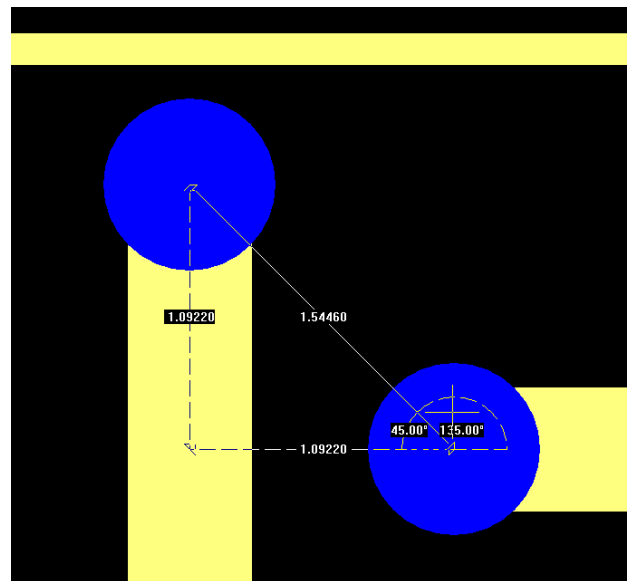
Measure Mode

To provide a more consistent feel across functionality we have updated the Measure Mode to behave similarly to the Dimensioning function.

Measure mode is still entered via the Toolbar Button or the right-click pop-up menu (Switch mode to...) and two entities are required to be picked in order for measure to work. However, the distance between the two picked features is now displayed on screen in the current job units. The four standard distances that are currently calculated (Center to Center, Edge to Edge, Center to Edge and Edge to Center) are displayed in the Co-ordinates Summary and the on-screen dimension can be changed to any of these distances by holding down the Shift key and double clicking on the mouse.



In addition to the simple distance display, the orthogonal distances can also be displayed. In order to display both orthogonal distances, simply hold down the Ctrl button and double click the mouse button. Repeating this process cycles back to the simple distance.



Find Angle

The old method of finding the angle of rotation in preparation of teaching a component has been replaced with the updated measure mode. Simply select the two features of interest and the appropriate angle is displayed on screen.

Polygon drawing Speed

An updated drawing algorithm has been implemented that results in significantly faster redrawing of polygons. Previously, on data intensive boards with multiple polygon interactions, the redraw speed was significantly slower than the standard draw speed as the drawing engine calculated dark and clear areas. The updated algorithm reduces the time to redraw the polygons and their interactions so that the redraw time is in line with standard draw speeds.

Printing update

Printing now allows for the information previously only accessible on screen (View Reference Designator, View Part Number and View Pin Number) to be printed. This update also applies to the Measure information discussed above allowing the measurement to be printed.

64bit Version now available

There is now a 64bit version available for download for any customer on a current support plan. Both the 32bit and the 64bit versions can be installed on the same computer. The 32bit version will install as v13.1.6 and the 64bit build will install as v13.1.8. The 32bit build will install into c:\Program Files (x86) by default and the 64bit build will install into c:\Program Files. The product names (for uninstalling) will be GC-PowerPlace 13.1.6 and GC-PowerPlace_x64 13.1.8 for example.

GWK files are compatible between 32bit and 64 bit versions but GWKs saved in this release will not read into earlier releases.

Items Fixed since v12.4.6

This list is customer reported issues fixed for this release.

- #182 Updated the print function to include information from the View Reference Designator, View Part Number and View Pin Numbering settings.
- #180 Updated internal decompression software to handle very long temporary path names encountered when loading ODB++ files
- #178 Added the ability to include the Part Number in the Assembly Documentation if the user checks the option box.
- #177 Speed up of polygon draw.
- #176 Added dimensioning and markup (see above).
- #175 Updated the behavior of the grid control to automatically display smallest magnitude first for DFM results. Also made the grid control sortable and updated the highlighting of cells.
- #174 Improved the sorting of DFM results.
- #171 Fixed an issue that caused a contour failure on this dataset due to the presence of a negative rectangle aperture.
- #170 Fixed an issue where RS-274X step and repeat information was being incorrectly carried over to the next loaded layer in a very specific situation.
- #169 Issue caused by incorrect mirroring of bottom side parts (with offset datum point) fixed in the Gencad export.
- #166 Modified the GC-Prevue startup message to explain product behavior (in terms of expiration)
- #160 Cleaned up the expiration notification to provide a specific date expiration for each released version.
- #49 ODB++ not loading some layers. Fixed as a side effect of fixing #180.