

# Release Notes GC-PowerStation v12.3

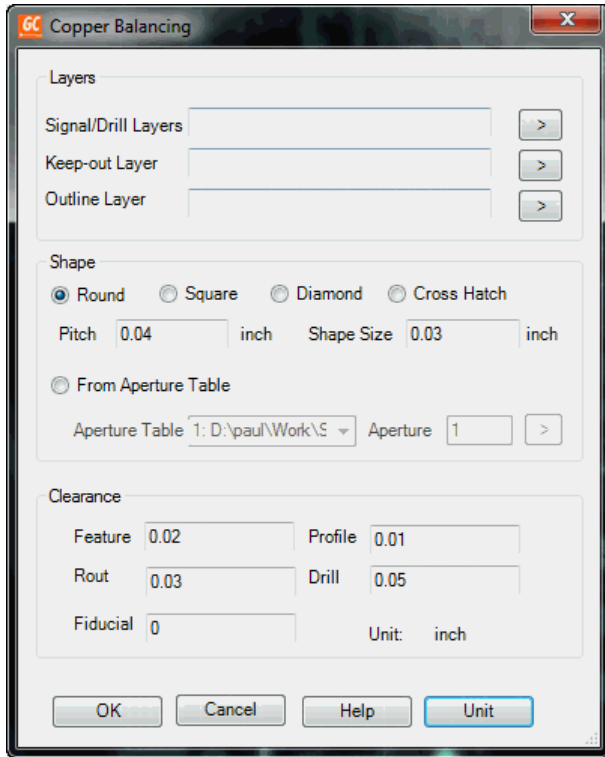
## Table of Contents

- NEW FEATURES ..... 2**
  - COPPER BALANCE..... 2
  - NEW AUTOMATION TOOLS ..... 2
  - 64BIT VERSION..... 2
  - ON LINE HELP..... 2
- IMPROVED FEATURES..... 2**
  - INTEGRATED PARTS CREATION ..... 2
- ITEMS FIXED SINCE V12.2.6..... 3**

## New Features

### Copper balance

A function to add copper to signal layers to balance out copper distribution across the layer has been added as part of the DFM functionality.



The function adds a user specified aperture, on a user specified pitch with various keep out distances around specific features. The function also allows a crosshatch pattern to be used. The additional pattern is added to a new data layer within each Signal physical layer to allow easy identification of the added data and allow additional user modification if necessary.

### New Automation tools

GraphiCode now provides a new Plugin framework for customers to allow them to customize their applications and develop new features and functions on the GC-Power Platform. This framework enables users to use Microsoft Visual Studio as platform to directly access objects, methods, and properties from GraphiCode applications. Users can develop, debug and build their projects in Microsoft Visual Studio and take advantage of its robust and extensive libraries and its features such as 'intellisense'. Users can use any programming languages that .net framework support for their project development such as C++, C#, VB.net, Java.

### 64bit Version

The 64bit version of GC-PowerPlatform will be available for testing alongside this release. If you are interested in obtaining the 64bit build please let us know at [support@graphiccode.com](mailto:support@graphiccode.com).

### On Line Help

All products have finally had their On Line Help files updated to the HTMLHelp format, allowing the Help file to appear within the product again.

## Improved features

### Integrated Parts Creation

The recently release Integrated Parts Creation has received a number of usability improvements with the ability to edit the Reference Designator from within the list of assigned parts. However, once the PASS filed has been sent to Yes, Editing of Reference Designator is disabled.

Auto capitalization has also been added for the Reference Designator field within the Settings area of the Integrated Parts Creation function.

## **Items Fixed since v12.2.6**

This list is customer reported issues fixed for this release.

#133 Adjacency information now being correctly written into IPC-D-356 files in certain instances.

#131 Fixed an issue within Integrated Parts Creation where Bottom Side parts were not being automatically detected.