

Release Notes GC-PowerStation v16.3

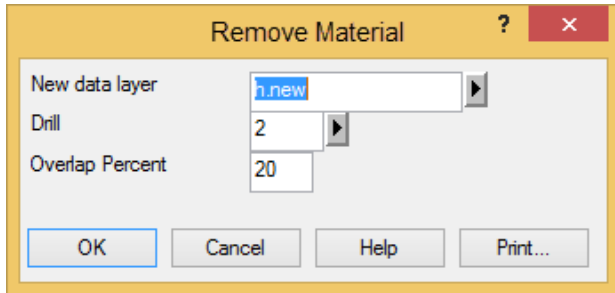
Table of Contents

NEW FEATURES	2
REMOVE MATERIAL	2
AUTO FIX FOR SOLDERPASTE PAD SPACING VIOLATIONS	2
ADDED NUMEROUS PLUGIN FUNCTIONS	2
ITEMS FIXED SINCE V16.2	3

New Features

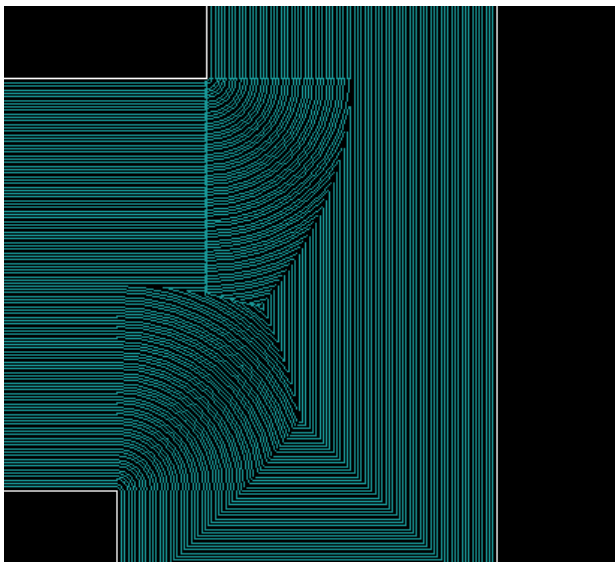
Remove Material

This function creates an optimized path to remove an area of material (for example removing material for a wave pallet). The function takes a selected area (including polygon areas) and calculates a path to cover the selected area with the minimum number of tool raises.



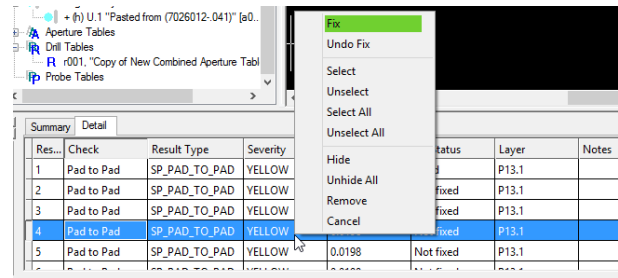
By default the created path is placed on a new Hole/Rout layer and uses the tool number selected from the existing tool table.

The path is calculated to minimize the number of 'tool up' transitions while covering the maximum selected area. The path will not cover areas where the specified tool diameter will not fit within the selected area.



Auto Fix for Solderpaste pad spacing violations

The option to AutoFix (by an equal pad shave approach) has been added to the SolderPaste Pad/Pad violation list. Right click on the specific DFM Result (SolderPaste Pad/Pad) to see the Fix option.



Added numerous Plugin functions

A number of plugin functions have been added to enhance the customization of the product. Details can be found within the Intellisense for the plugin.

Items Fixed since v16.2

This list is customer reported issues fixed for this release.

- #474 Fixed an issue that generated strange arcs in a Rout file using an old Plotter Definition File (PDF).
- #471 Added option to maintain original rout order after any direction (Clockwise or Counter-clockwise) routing path.
- #469 Addressed an issue regarding Tool Compensation that resulted in an incorrect resulting rout path.
- #465 Fixed a long standing issue regarding Select This Polygon function that was caused by the interaction of drawing options with the function.
- #463 Added the Remove Material function and associated algorithms.
- #458 Identify Copper now works on three problem datasets that previously produced No Result.
- #457 The GC Extension (plugin) was causing a floating dialog to freeze inadvertently. Fixed.
- #454 First iteration of the Shave Pads function failed to run. This fix led to an overhaul of the Shave Pads algorithm.
- #423 Added an option in the Reorder Rout function to keep every rout section present before reordering. This allows the resulting path to minimize the number of 'Tool Up' commands by allowing paths to retrace their path.